

- colors
- inspiration
- environment
- installation
- care

**marmoleum<sup>®</sup> click**  
*seriously fun floors...naturally*

creating better environments

**Forbo**  
FLOORING SYSTEMS



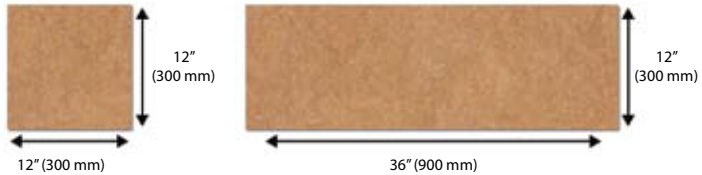
# create a better environment

## fun to design, easy to install, sustainable, beautiful flooring

Marmoleum Click is a natural product made primarily from renewable resources, including linseed oil, wood flour, and pine rosin. Click's inherent anti-static properties repel dust and dirt, making it easy to clean, reducing exposure to allergens, and contributing to better indoor air quality. The flooring "clicks" together for an easy, glueless installation so there are no chemicals or coatings with fumes and gases. These features make Marmoleum Click an ideal floor covering for people with asthma and allergies. In fact, Marmoleum Click is the first flooring product to be awarded the **asthma & allergy friendly™** Certification Mark! Click also features antimicrobial properties that halt the breeding of harmful micro-organisms, including MRSA and C-difficile.

Not only does Marmoleum Click help create a healthy environment, it also creates a beautiful environment. Available in 24 colors ranging from soothing neutrals to vibrant bolds, Marmoleum Click makes it easy to create inviting spaces that are unique to your home and lifestyle. Marmoleum Click provides beauty, durability, warmth and comfort underfoot, and is ideal for kitchens, living rooms, hallways, bedrooms, and offices.

Marmoleum Click is produced of natural linoleum on water-repellent HDF with a cork layer backing for an ecologically and acoustically sound solution. The panels and squares easily "click" into place using the Valinge locking system for a secure, glueless installation. The panels are approx. 12" wide x 36" long and can be used alone or in combination with the 12" x 12" squares. Also, since no glue is required, the floor can be walked on immediately after installation.



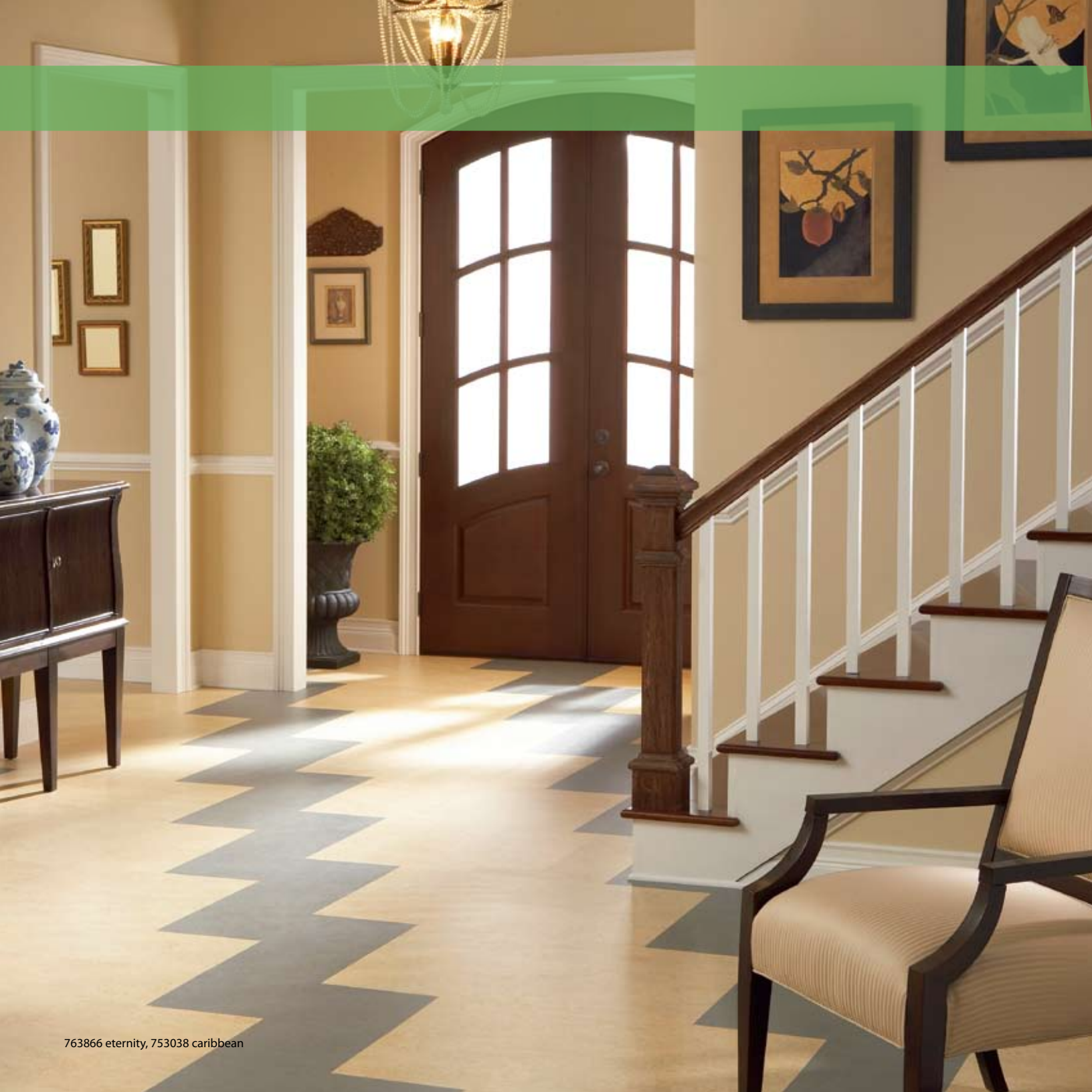
Marmoleum Click is the first flooring product to be awarded the **asthma & allergy friendly™** Certification Mark!

This certification mark is the result of a unique and ground-breaking partnership between Allergy Standards Ltd. and the Asthma and Allergy foundation of America. The "**asthma & allergy friendly™**" Certification Mark is the first of its kind, and can be found on a variety of products from children's toys to household vacuum cleaners.

CEO of Allergy Standards Limited, Dr. John McKeon stated the "**asthma & allergy friendly™**" Certification Mark indicates that a product or environment has been scientifically tested in our global network of state of the art, accredited laboratory facilities and is proven more suitable for people with asthma and related allergic sensitivities."







# live in color



□ 753858 □ 763858

barbados



□ 753038 □ 763038

caribbean



□ 753173 □ 763173

van gogh



□ 753846 □ 763846

natural corn



□ 753877 □ 763877

pineapple



□ 753174 □ 763174

sahara



□ 753870 □ 763870

red copper



□ 753203 □ 763203

henna



□ 753127 □ 763127

bleeckerstreet



□ 753202 □ 763202

wine barrel



753858 barbados, 753846 natural corn



□ 753878 □ 763878

lime



□ 753879 □ 763879

raspberry



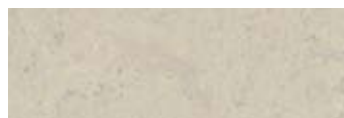
□ 753876 □ 763876

camel



□ 753874 □ 763874

walnut



□ 753860 □ 763860

silver shadow



□ 753872 □ 763872

volcanic ash



□ 753871 □ 763871

silver birch



□ 753233 □ 763233

shitake



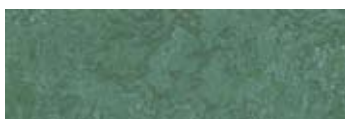
□ 753866 □ 763866

eternity



□ 753209 □ 763209

raven



□ 753201 □ 763201

eucalyptus



□ 753880 □ 763880

sky blue



□ 753856 □ 763856

whispering blue



□ 753205 □ 763205

lapis lazuli





# breathe easier

## The carpet in your home can harbor millions of allergens, including mold, mildew, dust mites, animal dander, and pollen.

These eye-opening facts are the concerns of every family or home owner looking to maintain a healthy living environment. Below, you will learn more about these allergens, how they can affect you, and how Marmoleum can dramatically reduce their presence in your home.

### dust mites

Dust mites are tiny bugs nearly invisible to the naked eye that can infest your home by the millions. They crawl through your carpets laying eggs and feed off the dried saliva and skin cells from pets and humans (dander). The waste particles left behind by dust mites are a major cause of asthma, wheezing and other respiratory allergies<sup>1,3</sup>. Every step you take on your carpet or every time you vacuum, small clouds of waste particles are propelled into the air where they can easily be inhaled. At least twenty minutes may pass until the particles settle back to the floor, according to the experts at HouseDustMite.org<sup>2</sup>.

Your carpets can be treated for dust mites, but you can bet that won't keep them away. If you have dust mite allergies, the American College of Allergy, Asthma & Immunology (ACAAI) states that you may need to remove the carpets in your home<sup>3</sup> – especially in the bedroom<sup>1</sup>.

### dander

Your pet plus carpeting on your floors can equal a big problem. Pet dander can reach breathtaking levels (literally!) as it becomes trapped in the carpet fibers and can remain there for up to six weeks at a time<sup>4</sup>. Additionally, cats and dogs who are permitted outdoors can bring a multitude of fleas, pollen and mold spores into your home on their fur<sup>5,6</sup> – making your carpets a reservoir for unwanted allergens.



dust mite

### caustic chemicals

Many factors affect the indoor air quality of your home: lead and pesticides can contaminate your carpets when they are innocently transported indoors by your shoes or on your pets; building materials emit harmful chemicals known as volatile organic compounds (VOCs) into the air; chemical fumes from the synthetic fibers, backing, padding, cleaners, and adhesives and glues used to install carpeting<sup>7</sup>; even the flame-retardants and stain-resistant materials are at fault. Indeed, one has saved many lives while the other has prevented many inconvenient messes, but both have been linked to a range of developmental and other adverse effects<sup>8</sup>. The Healthy Building Network adds that some vinyl flooring can leach dangerous substances – including phthalate plasticizers, lead, cadmium, dioxins and PVC (polyvinyl chloride, i.e. vinyl). PVC is listed as the worst plastic from an environmental and health perspective. The list of problems associated with PVC (asthma, lead poisoning and cancer) far outweigh the benefits of its cost-effective use<sup>9</sup>.

## You'll be happy to know that Marmoleum flooring is listed as an HBN PVC Free Flooring Product™.

### here is how Marmoleum® can help

Marmoleum Click is made of natural ingredients and has both anti-bacterial and anti-allergen properties. Studies\* have shown that harmful microorganisms cannot live or breed on Marmoleum flooring, which makes it the only flooring choice for those concerned about their health and environment. Marmoleum Click is also the first flooring product to be awarded the **asthma & allergy friendly™** Certification Mark!

\* For more information, download our test results at [www.themarmoleumstore.com](http://www.themarmoleumstore.com).



From Marmoleum Click's natural ingredients to its glueless installation, you won't find ANY harmful substances in Marmoleum, including lead or chlorine. The result is a biodegradable floor that has reduced allergen levels, is bacteria-resistant, and easy to clean.

### for more information

- EPA Indoor Air Quality Tools for Schools Program: [www.epa.gov/iaq/schools](http://www.epa.gov/iaq/schools)
- National Institute of Allergy and Infectious Diseases  
How to Create a Dust-Free Bedroom Fact Sheet: [www.niaid.nih.gov/factsheets/dustfree.htm](http://www.niaid.nih.gov/factsheets/dustfree.htm)
- Asthma and Allergy Foundation of America Indoor Air Quality Fact Sheet:  
<http://www.aafa.org/display.cfm?id=9&sub=24&cont=344>
- American Lung Association Health House™ Program, Dust Mites Tip Sheet  
[http://www.healthhouse.org/tipsheets/TS\\_Dust%20Mites.pdf](http://www.healthhouse.org/tipsheets/TS_Dust%20Mites.pdf)
- National Asthma Campaign (U.K.): [www.asthma.org.uk](http://www.asthma.org.uk)
- The Healthy Flooring Network (U.K.), Glamour Against Carpets Grows Stronger:  
<http://www.healthyflooring.org/pressreleases.html>
- Air Quality Sciences: [www.aqs.com](http://www.aqs.com)
- HouseDustMite.org: [www.housedustmite.org](http://www.housedustmite.org)

### sources cited

- 1 [www.familydoctor.org/683.xml](http://www.familydoctor.org/683.xml)
- 2 [www.housedustmite.org/research\\_page\\_pro.asp?researchid=1](http://www.housedustmite.org/research_page_pro.asp?researchid=1)
- 3 [www.medem.com/search/article\\_display.cfm?path=n:&mstr=/zzwtvx7mf6c.html&soc=ACAAI&srch\\_type=nav\\_serch](http://www.medem.com/search/article_display.cfm?path=n:&mstr=/zzwtvx7mf6c.html&soc=ACAAI&srch_type=nav_serch)
- 4 [www.niaid.nih.gov/publications/allergens/airborne\\_allergens.pdf](http://www.niaid.nih.gov/publications/allergens/airborne_allergens.pdf)
- 5 [www.aaaai.org/patients/seniorsandasthma/pets\\_allergies.stm](http://www.aaaai.org/patients/seniorsandasthma/pets_allergies.stm)
- 6 [http://www.medem.com/medlb/article\\_detail.cfm?article\\_ID=ZZK3E2Iz6C&sub\\_cat=529](http://www.medem.com/medlb/article_detail.cfm?article_ID=ZZK3E2Iz6C&sub_cat=529)
- 7 <http://dep.state.ct.us/wst/recycle/greenind.htm>
- 8 [www.healthybuilding.net/pdf/Healthy\\_Building\\_Material\\_Resources.pdf](http://www.healthybuilding.net/pdf/Healthy_Building_Material_Resources.pdf)
- 9 [www.healthybuilding.net/pvc/facts.html](http://www.healthybuilding.net/pvc/facts.html)
- 10 [www.healthybuilding.net/pvc/PVCFreeResilient.html](http://www.healthybuilding.net/pvc/PVCFreeResilient.html)



753874 walnut, 753876 camel,  
753871 silver birch

## a natural choice

### natural Marmoleum®

Marmoleum Click has a top layer of natural Marmoleum. The main ingredient in Marmoleum is **linseed oil**, produced by pressing the seeds of the flax plant. The flax plant, also a source for linen, is an easy-to-cultivate plant that is in abundant supply.



**Pine rosins** are mixed with the linseed oil to produce a flexible binder. The pine trees from which the rosins are extracted exist in abundance throughout the world.



**Wood flour** is obtained through controlled forestry, including the planting of special forests. No tropical hardwoods are ever used.



When it comes to our beautiful colors, only **ecologically friendly pigments** are used.



The backing for Marmoleum is made from spun yarn of strong **jute** fiber, grown primarily in India and Bangladesh. Jute is plentiful and highly renewable.



### why choose Marmoleum® Click?

#### 1. easy to install

Marmoleum Click panels and squares are easy to install. With a simple tongue & groove mechanism, the panels simply “click” into place. And no glue is required, so the floor can be walked on immediately after installation.

#### 2. easy to clean

Thanks to Marmoleum’s natural ingredients, Marmoleum Click is anti-static, so dust won’t cling to it. Keeping your floor clean and dust free is easily achieved by dust mopping and damp mopping.

#### 3. healthy & hygienic

Because it is so easy to clean, Marmoleum Click makes life easier for people with asthma, allergies, and other respiratory disorders. Marmoleum Click is the first flooring product to be certified by the Asthma and Allergy Foundation of America as **asthma & allergy friendly™**. For more information on the certification, please visit [www.asthmaandallergyfriendly.com](http://www.asthmaandallergyfriendly.com).

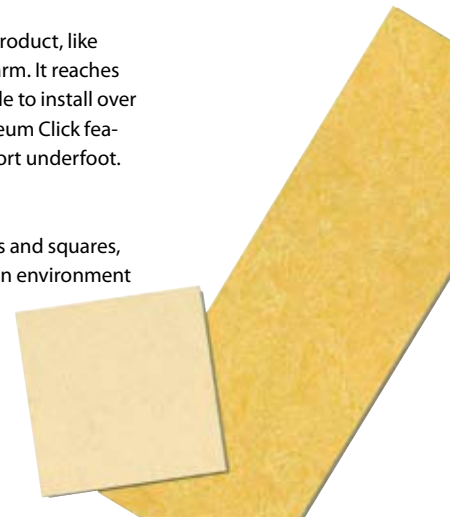
Marmoleum Click is also naturally bacteriostatic. Independently done lab tests show that Marmoleum Click inhibits the growth of many micro-organisms, including the MRSA strains of bacteria.

#### 4. warm & comfortable

Because Marmoleum Click is a natural product, like wood, it makes your home snug and warm. It reaches room temperature quickly and is suitable to install over hydronic radiant heat systems. Marmoleum Click features a cork backing for quiet and comfort underfoot.

#### 5. beautiful

Available in 24 beautiful colors of panels and squares, Marmoleum Click allows you to create an environment unique to your home and lifestyle. Color-coordinating transition moldings are available to add the finishing touch.







# imagine the possibilities



763876 camel,  
753872 volcanic ash



763866 eternity, 763872 volcanic ash,  
763878 lime, 763860 silver shadow



763876 camel, 763871 silver birch,  
763860 silver shadow



763880 sky blue,  
753858 barbados



753209 raven,  
753872 volcanic ash

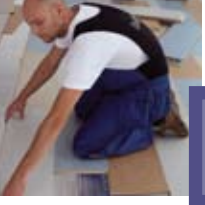


753874 walnut, 753876 camel,  
753870 red copper, 753871 silver birch



763876 camel, 763874 walnut,  
753880 sky blue





# installation

Click Panel Dimensions . . . . . 12" x 36" approx. (900mm x 300mm)  
Click Square Dimensions . . . . . 12" x 12" approx. (300mm x 300mm)

## Structure:

Total Thickness . . . . . 9.8mm  
    Surface . . . . . 2mm Marmoleum  
Base Material . . . . . 6.8mm HDF  
    Backing . . . . . 1mm cork  
Carton Contents . . . . . 7 panels for 20.3 sq. ft. (1.89m<sup>2</sup>)  
    . . . . . 7 squares for 6.7 sq. ft. (0.63 m<sup>2</sup>)

## general information:

Marmoleum Click has a top layer of Marmoleum, which is made from predominantly harvestable natural raw materials and is processed according to an environmentally friendly procedure. Its main ingredient is natural linseed oil, which is mixed with wood flour, rosin and limestone. Marmoleum receives its color from ecologically responsible pigments. Pressed onto a jute fabric under high pressure, an extremely durable and environmentally friendly flooring is produced. As Marmoleum is made from natural raw materials, slight color and structural differences are possible between the production batches, samples and the goods to be delivered.

As Marmoleum completes its maturing process, a temporary variable natural phenomenon occurs which may give the product a yellowish cast. Exposing the product to either natural or artificial light causes the yellowing to disappear and the true color of the Marmoleum to develop.

## getting started:

**IMPORTANT: The Marmoleum Click boxes should be stored flat, and unopened, for approx. 2-3 days (approx. 6 days in winter) in the center of the room in which they are to be installed.**

Tools and Materials Required: Hammer, straight back hand saw, keyhole saw or jigsaw, tape measure, pencil, fitting wedges, tapping block, angle or adjustable bevel, and underlayment foam (for concrete subfloors).

The ambient room temperature should be at least 68° F or 20° C and the ambient relative humidity approx. 50-60%. To maintain the long term value of Marmoleum Click, we recommend the use of a humidifier to avoid extreme drying out during the heating season. The panels should be inspected for manufacturing defects prior to installation.

Marmoleum Click can be installed on any clean, dry, structurally sound subfloor. The subfloor must be flat to within 3/32" in 6' (2mm in 2M). For concrete subfloors, internal relative humidity should be a maximum of 75% (tested in accordance with ASTM 2170) and moisture vapor emission must not exceed 3 pounds per 1000 square feet in 24 hours (tested in accordance with ASTM 1869).

When installing over a concrete subfloor or any subfloor with underfloor heating, always cover the subfloor with a vapor barrier. The edges of the vapor barrier should extend up the walls at least 2" with a minimum overlap of 8" at the seams.

**IMPORTANT: Please note that a gap of 3/8" (10mm) is required for expansion on all sides between the floor construction and the wall. This distance must also be provided at all columns, heating pipes, steel door frames, etc.**

## For Bathrooms or other areas at risk for spills:

Marmoleum Click is resistant to water, but it is not waterproof. It is important to minimize any opportunity for damage by cleaning spills immediately. It is also very important to take measures during the installation that will prevent water or moisture from getting underneath the Marmoleum Click.

1. If a floor drain or sump pump is present, it is there for a reason. DO NOT INSTALL Marmoleum Click on that level.
2. All expansion spaces, such as between the Marmoleum Click and walls, the doorway transition or other fixed objects such as pipes for radiators, sinks, or toilets, MUST be sealed with 100% mildew-resistant silicone.
3. Spills should not remain on the surface of Marmoleum Click longer than 30 minutes.

Marmoleum Click is installed without any need for glue. Marmoleum Click can be installed by placing the tongue into the groove as well as the groove into the tongue, however it is easier to work so that you are placing the tongue into the groove.

1. Inspect each panel for damage prior to installation.
2. The first row of panels is installed along the wall, whereby the first panel is positioned in the left-hand corner of the room. It is recommended to install the panels perpendicular to incoming light from the (main) window. Use spacers to maintain a gap of 3/8" at the wall.

Saw off the tongue of the first panel, both on the short as well as on the long side, which will be placed next to the wall. For all the other panels which are laid in the first row, only the tongue on the long side is sawn off.

The panels are installed with the sides where the tongue has been sawn off facing the wall.

Please note the following when sawing the panels: If using a hand saw, the Marmoleum (decorative) side must be facing upwards. If using a power saw, the direction of the blade must cut into the Marmoleum side of the board.

3. The second panel is now positioned with the tongue of the short side against the groove in the already installed panel and the opposite end slightly raised. The raised end of the panel is then lowered, clicking the panels together. Using the same procedure, continue installing panel after panel, over the whole width of the room. The last panel is cut to length, being sure to leave a  $3/8"$  gap at the wall. The panels in the first row must be perfectly straight.

4. The fitting wedges are then placed against the long side of panel 1 (row 1).

5. To begin installing the second row, cut a panel to a length of approx. 24". Leaving a  $3/8"$  gap at the wall, place this panel on the fitting wedges and push it against Row 1. The next complete panel is then positioned with its short end fitted neatly into the previous panel with more fitting wedges also placed underneath it. The panel is then pushed tightly against the previously installed row. Proceed in this manner across the width of the room, fitting the last panel with a  $3/8"$  gap at the wall. When the entire row has been positioned, remove the fitting wedges and push the whole row against the previous row and downward so that it clicks into the previously installed row.

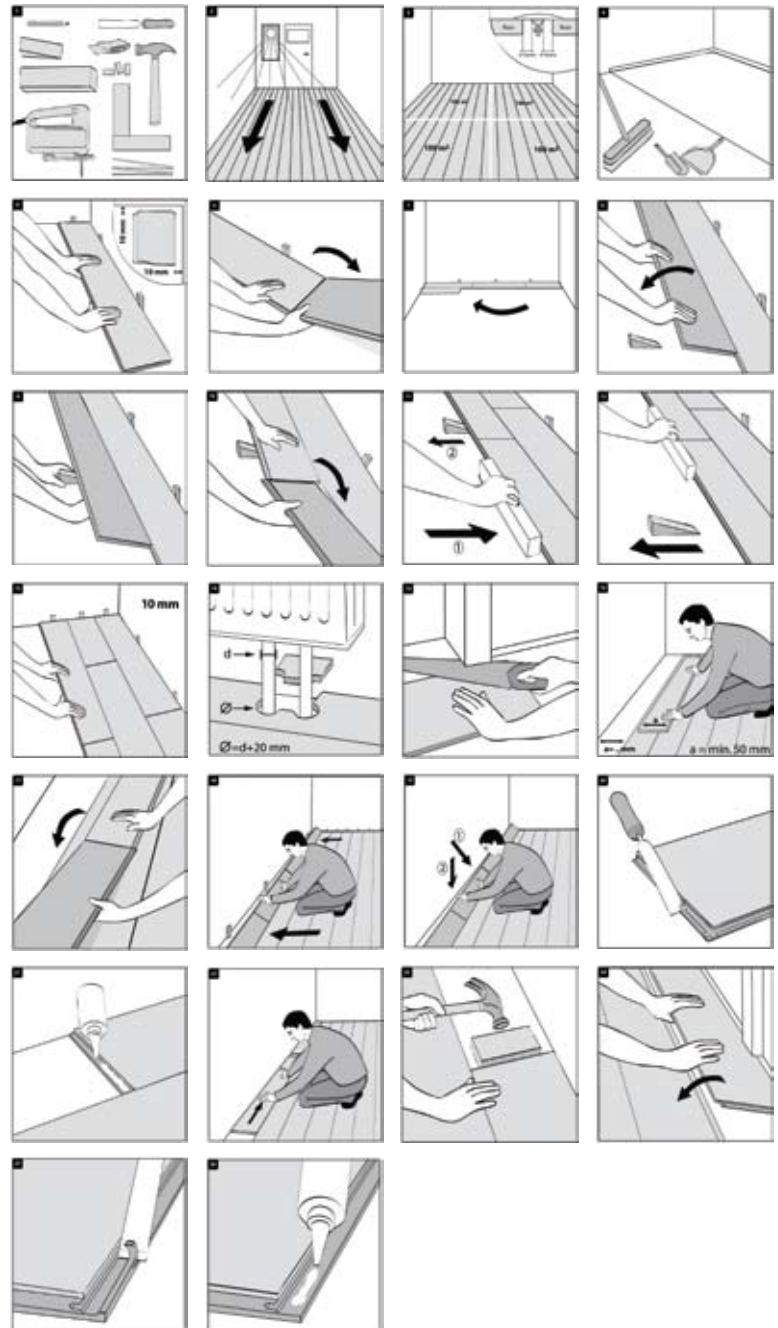
6. The panels are now installed row after row in the same manner. Please note that it is important to stagger the end joints a minimum of 12" and to leave a minimum  $3/8"$  gap at all vertical obstructions.

7. Cut the panels for the final row to size, making sure to allow for a  $3/8"$  gap to the wall. Where there are no obstructions, the final row can then be installed in the same manner as all previous rows.

Where there are door moldings or other obstructions that the panels of the final row must slide under, remove the locking ridge from the groove side of the previous row. The final row can then be slid underneath the obstruction to allow it to lay flat, and then pulled back into position against the next to last row. The joint where the locking ridge has been removed must be secured using a wood adhesive.

After installation of the last panels, base or quarter round molding is installed to cover the expansion joints all around the room.

The floor can be walked on immediately after installation.





## caring for your floor

Marmoleum Click has a strong, durable protective top layer – **Topshield**. This innovation from Forbo ensures a highly effective shield against dirt and scuff marks. Marmoleum with Topshield is ready for use immediately following installation and does not require the application of additional protective coats of finish. With Topshield, your Marmoleum floor will maintain its beautiful appearance with simple cleaning. Dry dusting is a fast and easy way to keep your floor free from loose dirt. Remove spots with a mop or cloth dampened with diluted Marmoleum Floor Cleaner. Avoid excessive use of water on the floor, and make sure chair and furniture legs are covered with felt protectors. An entrance mat will protect the floor from dirt.



### Initial Care Following Installation:

1. Remove loose soil and grit by sweeping, dust mopping or, preferably, vacuuming the floor. Micro-fiber dusters are also recommended.
2. Dilute 1 ounce (3 capfuls) of Marmoleum Floor Cleaner in 1 gallon of clean water.  
Note: Marmoleum is made from natural raw materials. The use of harsh alkalis or high pH cleaners (such as Ammonia or similar products) may damage Marmoleum and should be avoided.
3. Apply the cleaning solution with a mop or sponge. Do not flood the floor or use too much water.
4. Pick up any soil and excess cleaner with a clean mop or cloth. When mopping, rinse the mop frequently and change the solution as needed.
5. A non-abrasive nylon scrubbing pad can be used for cleaning small stubborn spots. For larger areas of stubborn soil, a long handled, soft bristled nylon scrub brush is ideal.
6. Rinse the floor with a clean, damp mop.
7. Allow the floor to thoroughly dry before allowing traffic.

### Regular Care:

Sweep, dust mop, damp mop and/or vacuum as needed. For ingrained dirt, a scrubbing sponge (non-abrasive) or nylon brush is ideal. When damp mopping, always follow with a clean water rinse and allow the floor to thoroughly dry before allowing traffic. When light cleaning no longer produces the desired results, repeat the recommendations for Initial Care.

### Spots & Spills:

The vast majority of spills, including pet accidents, can be cleaned off your Marmoleum floor.

1. Act quickly.
2. Blot as much as possible or carefully scrape dried spills with a plastic scraper.
3. Mop with diluted Marmoleum Cleaner.
4. Damp mop with clean water.
5. Repeat steps 3 & 4 if necessary.  
If the stain persists, as it may with glue, varnish, paint, ink, tar, cosmetics, shoe polish, some wines, coffee and some other substances, the solution is to remove the surface finish and the stain with it.

Apply undiluted Marmoleum cleaner to the stained area and leave in contact with the floor for 2–3 minutes. Rub with a nylon kitchen pad and then rinse with clean water. Repeat if necessary. Once the floor is dry, apply a small amount of finish in the affected area to restore the gloss.

### Restorative Care:

In case of accidental damage to the Topshield top layer, excessive wear or a desire for additional gloss, the following steps can be taken:

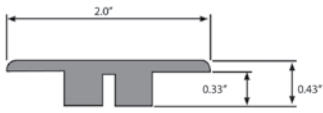
1. Remove loose soil and grit by sweeping, dust mopping or, preferably, vacuuming the floor. Micro-fiber dusters are also recommended.
2. Apply undiluted Marmoleum Floor Cleaner with a mop or sponge. Do not flood the floor, but make sure that the surface remains wet for five minutes.  
Note: Marmoleum is made from natural raw materials. The use of harsh alkalis or high pH cleaners (such as Ammonia or similar products) may damage Marmoleum and should be avoided.
3. Pick up any soil and excess cleaner with a clean mop or cloth. When mopping, rinse the mop frequently and change the solution as needed.
4. A non-abrasive nylon scrubbing pad can be used for cleaning small stubborn spots. For larger areas of stubborn soil, a long handled, soft bristled nylon scrub brush is ideal.
5. Repeat steps 2 through 4 if necessary.
6. Rinse the floor with a clean damp mop.
7. Allow the floor to thoroughly dry before allowing traffic.
8. Evenly apply two coats of Marmoleum Floor Finish using a clean, lint-free cloth, or a micro-fiber mop applicator. If using the same mop that was used for cleaning, it must be thoroughly rinsed and clean. The finish should be applied liberally enough to avoid creating “dry spots” or streaks, but no more. Evenly applied thin coats will produce better results than one thick coat.
9. Allow a minimum of 45 minutes drying time between coats.
10. Additional coats may be applied if a higher gloss level is desired. Do not apply more than 4 coats in one day. Please note that following regular cleaning recommendations on an as needed basis will significantly reduce, and in most cases eliminate, the need for more aggressive floor care procedures.

**For further questions, please contact Forbo’s Technical Dept:  
1-800-342-0604**



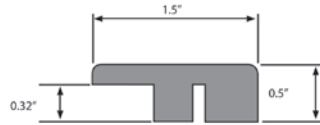
## transition moldings

Transition moldings (3/8") are used to give a beautiful finished appearance to your Marmoleum Click installation. There are a variety of transitions available to join Marmoleum Click to Marmoleum Click or other flooring that is the same exact height, Marmoleum Click to other flooring materials of different heights, and Marmoleum Click to fixed objects, stairs, or vertical surfaces.



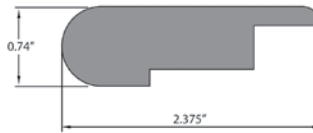
### t-mold

Used to bridge two areas of flooring that are the exact same height. The T-Molding overlaps the exposed edges of the Marmoleum Click and is secured only to the subfloor, never to the flooring itself. Generally this trim is used as the transition piece between rooms, or as the expansion piece for areas that exceed 26 ft. in length.



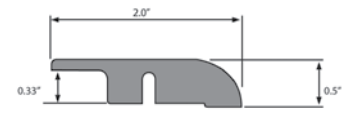
### overlap squarenose

Used where Marmoleum Click transitions to carpeting, or various vertical surfaces where the edge will be exposed, such as along a fireplace.



### overlap stairnose

Used to finish stair edges or step-down applications.



### overlap reducer

Used to create a smooth transition between Marmoleum Click and a floor of a different height. Also used to protect exposed edges of the panel from foot traffic damage.

**NOTE:** An expansion joint also has to be provided if the surface to be covered is longer or wider than 26'. This expansion joint should be covered with a "T" shaped profile. The same applies in the area of doors, connecting passageways and polygonal-shaped rooms. In general, adjacent rooms must be separated with a "T" molding. Use an overlap reducer to transition to adjacent, lower lying areas or floor coverings. An overlap end profile is ideal for clean finishes of the flooring in front of higher, adjacent sills, tiles or other raised floors. An adequate gap must also be provided at door frames or wooden door frames cut short. To do this, place a loose panel against the door frame with the Marmoleum side facing downward, and saw the frame off along the panel.



## ambering

Marmoleum is made from natural materials and many of its most desirable performance attributes (durability, anti-microbial properties) are the result of the continued oxidation of the linseed oil over its life. During the manufacturing process this oxidation may result in a yellowish cast, known as ambering, on the product when it is initially taken out its packaging. This visual discoloration is only TEMPORARY. When exposed to light, the ambering disappears. The process may take only a few hours in bright sunlight but longer with artificial light. Applying a finish over the ambering makes NO difference – it will still disappear with exposure to light.



North American Headquarters  
**Forbo Flooring Systems**  
 8 Maplewood Drive  
 Humboldt Industrial Park  
 Hazleton, PA 18202  
 Tel.: 1-866-MARMOLEUM  
 Fax: 570-450-0258  
[www.themarmoleumstore.com](http://www.themarmoleumstore.com)

Canada Office  
**Forbo Flooring Systems**  
 25 Pollard Street  
 Richmond Hill, ON L4B 1A8  
 Tel.: 1-866-661-2351  
 Fax: 416-661-5362  
[www.themarmoleumstore.com](http://www.themarmoleumstore.com)

12/08/1K/MDW



**marmoleum<sup>®</sup> click**  
*seriously fun floors...naturally*



Forbo Flooring Systems uses FSC-certified paper and cardboard and soy-based ink in the printing of its marketing and corporate materials. Additional copies of this brochure, and other Forbo literature, can be downloaded from [www.forboflooringNA.com](http://www.forboflooringNA.com)

**creating better environments**

