



Kährs

QUALITY IN WOOD SINCE 1857



Beauty with a conscience



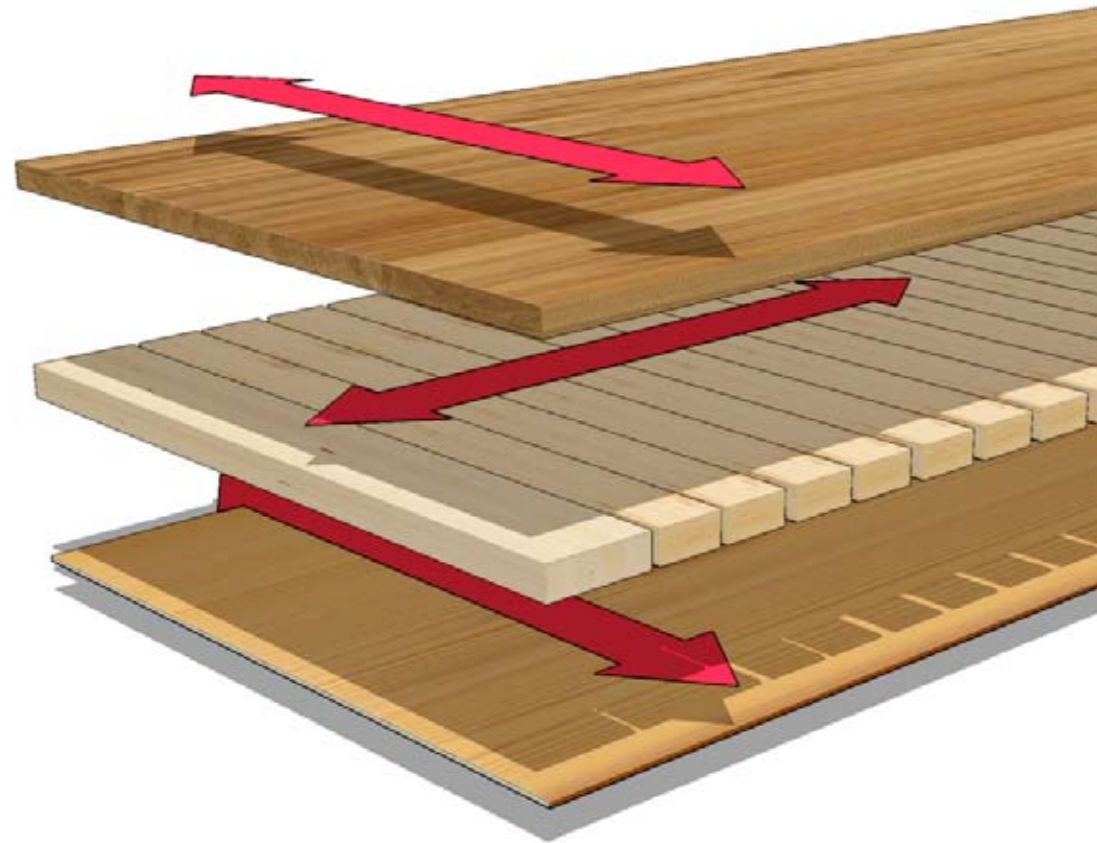
Flooring is one of the most important elements when you wish to create a specific look in your home's interior. Therefore, we develop and design a multitude of different wood floors – all beautiful in their own way – to suit all tastes and styles.

All man-made products affect the environment. To counteract these effects, we have adopted an ecological approach that permeates everything we do.

The wood we use is almost entirely from Scandinavia and Europe, where new growth exceeds that which is harvested. In 1984 Kährs was the first manufacturer to boast an entirely solvent-free production process. Our multi-layer construction allows us to take full advantage of each log, using fewer resources than in solid floor production.

This approach earned Kährs the ISO14001 environmental management certification nearly a decade ago. It is this level of dedication that allows us to create and produce floors that are not only beautiful but also contribute to the well being of generations to come.

THE FLOOR



CONSTRUCTION OF OUR PLANK

1. The four to six layers of Kährs UV-cured acrylic finish is factory-applied and ready to be walked on as soon as the floor is installed.
2. The top layer of the hardwood is available in many different wood types and patterns.
3. A supporting layer guarantees stability and shape retention.
4. Our 9/16" and 5/8" thick products have a backing of Pine or Spruce, giving added shape retention to a float-in installation.

THE SMARTEST SOLUTION TURNED OUT TO BE GREEN

Choosing a wood floor is a responsible choice. Picking a Kährs wood floor means making an even smarter green decision. We are one of the oldest manufacturers of wood floors in the world and also one of the most innovative. Our inventions have radically transformed the production of wood floors globally – and made the future of the planet look brighter.

150 YEARS OF INNOVATIONS

Kährs is situated in Nybro, a small town in the heart of the forests of Småland, in southern Sweden. The company stands at the same site where it was founded 150 years ago. In 1857, Johan Kähr started a small turning shop and began producing wooden articles for the local farmers. Today, the Kährs Group is Europe's largest wood flooring manufacturer, and one of the world's most innovative companies involved in the processing of wood. The combination of tradition, knowledge and innovation made us pioneers in the production of environmental friendly flooring.

DESIGNED FOR A BETTER ENVIRONMENT

Over the years, we have strived to capture the beauty and expression of wood. We have learned to combine this beauty with leading floor technology to produce high quality wood floors which are durable, stable, and easy to install. Today, Kährs floors are available in over 20 wood species, and satisfy the demands of a consumer looking for a floor that will contribute to a better environment.

1. Kährs only makes wood floors – and wood is a renewable flooring material (the raw material can be replaced within several years).
2. Our multi-layered floor construction means that the raw material is used in the most effective way.
3. Most Kährs floors can be installed using Woodloc, giving tight joints without using glue.
4. Kährs floors are manufactured in the most environmentally responsible way.
5. Kährs constantly strives to find the most environmentally friendly stains and finishes
6. The surface is easy to clean and maintain without the use of strong chemicals.



ONLY NATURE'S MATERIAL

Nothing but wood since 1857

Wood is natural and grows in our forests. Wood is beautiful to look at, comfortable to walk on, non-allergenic, and creates an ambience that lasts a lifetime. Wood is also renewable. Unlike plastics and other materials, when wood must be replaced at some stage in the future it can be returned to nature. Since the beginning, Kährs has focused only on wood and it continues to be our passion.



SAME AS SOLID

The same wear layer

A wood floor from Kährs is constructed on a multi-layer principle. A Kährs multi-layered floor is stable and stays level even during seasonal variations in temperature and humidity. Kährs top layer can be professionally sanded and refinished at least twice during its lifetime, guaranteed. It is also kinder to nature than a solid wood floor; because we use only fast-growing wood as a core material, it is less of a drain on natural resources.

SOLVENT-FREE FINISH

Since 1984

Kährs introduced the first solvent-free finish and started its own environmental program in 1984 – long before this became general practice. Kährs was, in fact, the first floor manufacturer to boast an entirely solvent-free production process.



RECYCLE

Take the floor with you

Your beautiful Kährs wood floors can be given a new life when "recycled" and used in your new home. Floors with Woodloc construction can be easily removed and taken with you. At the end of the product's life, it can easily be used for energy – or returned to nature as it is biologically degradable.



LONG LIFE

Lasts for generations

Wood floors last for generations. When considering what kind of floor covering to use in your new home or remodeling project, keep in mind that wood floors last a lifetime.



GLUELESS

Woodloc®, the strongest joint

In 2000, Kährs introduced the world's first engineered wood floor with the glueless Woodloc joint. This technology was seen as revolutionary, resulting in faster installation and perfect results. It also means a bonus for the environment, by eliminating glues from the installation process.

WATER-BASED STAINS

First to replace synthetic stains

In the early 1990s, Kährs was one of the first floor manufacturers to replace synthetic-based stains with water-based stains. The new process enabled us to further enhance the colors created by nature – without causing harm.

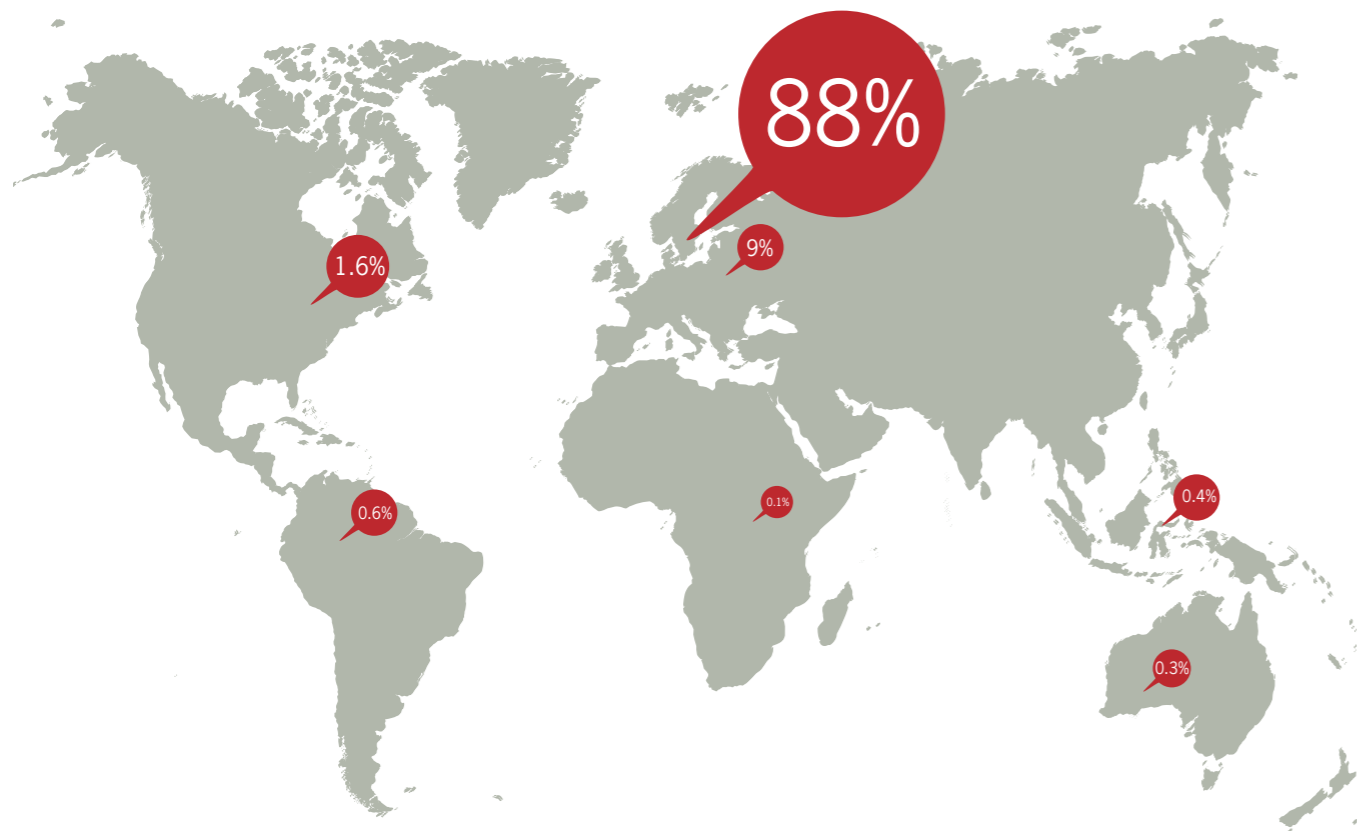


LOW EMISSIONS

Formaldehyde

We are constantly developing our finish in cooperation with leading finish manufacturers. We do this to minimize any emissions of formaldehyde. How well are we doing? Well, if you compare an entire Kährs floor to an apple, you'll find that they emit the same amount of formaldehyde.

THE RAW MATERIAL



THE WOOD NEXT DOOR

Most of our raw material grows near our factory in Sweden. Swedish forests are a cultural heritage. For each tree harvested, 5 new trees are planted. Apart from minimizing transport, an added environmental bonus is that the wood waste in our processes is used to produce enough energy to heat the Kährs factory and the whole neighborhood.

Our range of floors includes many of the world's most beautiful species from the most exciting parts of the globe. However most of our raw material grows right outside our main production plant in Sweden. Wood is a renewable raw material – and in Sweden the amount of forest has increased steadily over the past 100 years. In fact, there are far more trees planted than harvested each year.

Not only do we source most of our material from the abundant forest in our own backyard, we also use it as efficiently as possible. Our floors are constructed on a multilayer principle, which means that we take full advantage of the entire log.

KÄHRS PROMOTES ENVIRONMENTAL AWARENESS
Although most of the raw material we use is produced locally, Kährs is determined to promote environmental awareness globally. This is why tropical species in our range come from countries who are members of the International Tropical Timber Organisation (ITTO). All members of the organization have pledged to work towards ecological forestry.

When purchasing tropical timber we purchase raw materials from responsibly-managed forests. Suppliers are chosen principally from those who hold an FSC (Forest Stewardship Council) or PEFC (Programme for the Endorsement of Forest Certification) certificate or are able

The vast majority – 88 per cent – of the raw material we use is produced less than 124 miles from our factory in Sweden. Logs use more space than finished floors in transportation. And keeping transports down is a long term investment in our globe.

to demonstrate that they operate environmentally-aware timber procurement.

EFFICIENT SHIPPING

Kährs constantly evaluates new wood species in order to be able to offer the most beautiful, practical and environmentally-friendly floors. Our log purchasers also check continuously that the forestry methods being used comply with our high demands.

After a careful evaluation process, the material we choose to import is shipped to the harbor at Gothenburg, where it is transported to Nybro. In order to ensure efficient shipping, the logs are pre-cut for more economical use of space.



88%

Closer than 124 miles

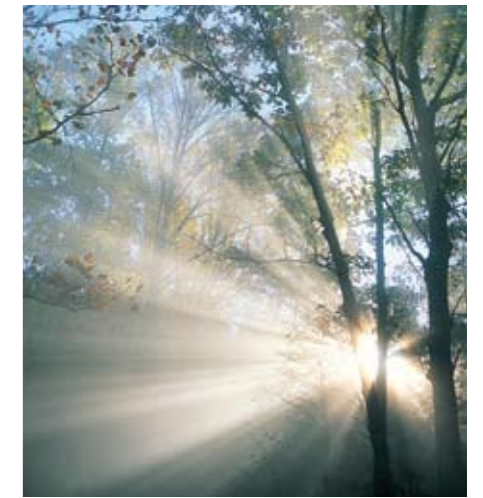
More than 88 percent of the raw material we use grows less than 124 miles from our factory. Our multilayer construction allows us to use fir and pine trees for our middle core. These species grow abundantly in local forests.



434 MILES

Average transportation of raw material

Much of the raw material we use is produced locally, keeping transportation to a minimum. All material for the middle core grows close to the factory, this is also true for species such as Birch and Oak which are used for the high grade surface layer. The average transportation distance for our raw material is only 434 miles. Logs use more space than finished flooring material which is why it makes green sense to have close access to the raw material.



FSC

Only controlled suppliers

Kährs only chooses suppliers who hold an FSC (Forest Stewardship Council) or PEFC (Programme for the Endorsement of Forest Certification) certificate or who are able to demonstrate that they operate environmentally aware timber procurement. FSC certification of a product means that it can be traced back to its origin.



5

5 trees are replanted for every one tree harvested

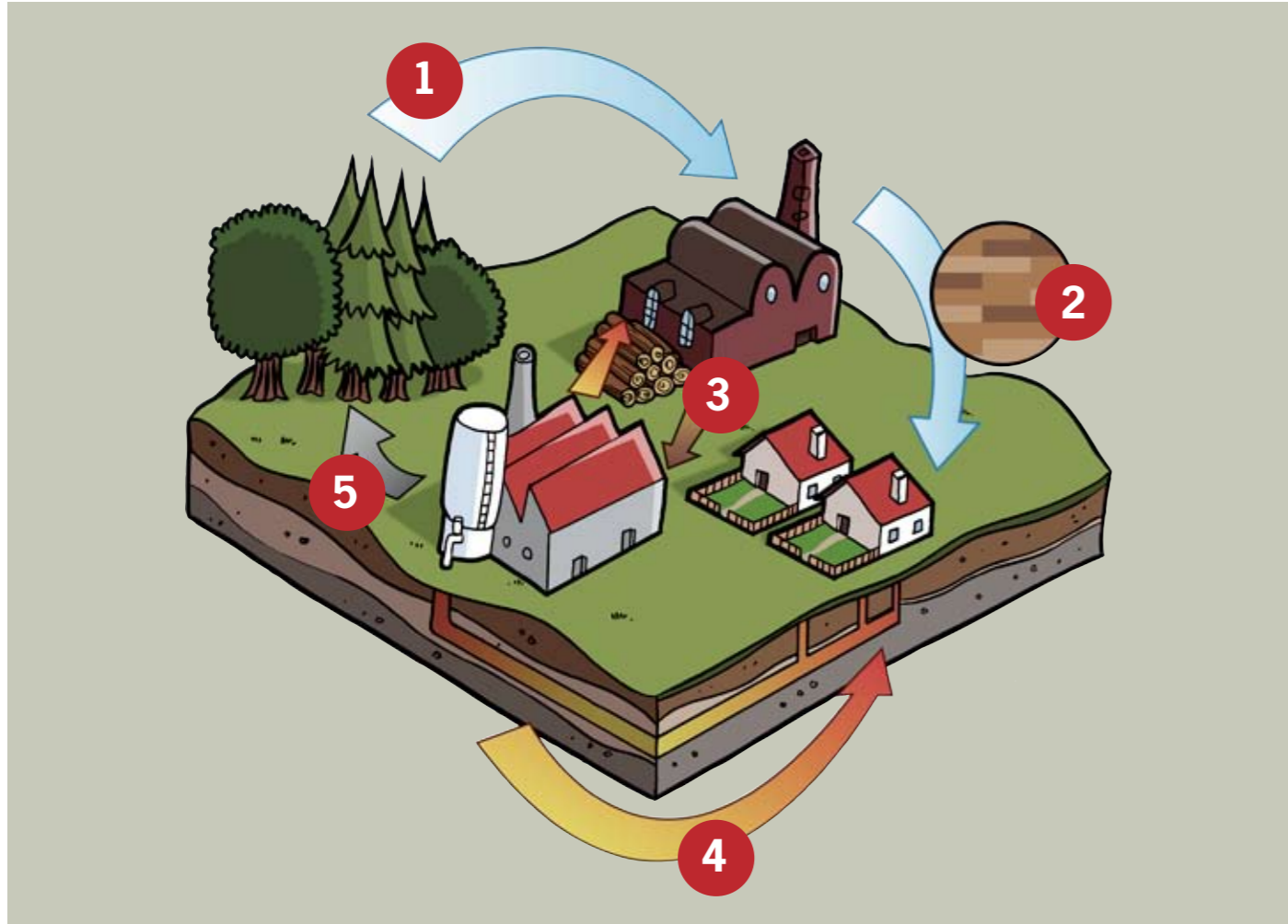
The forests in Sweden have increased in size steadily over the past 100 years. The number of planted trees exceeds the amount harvested; making continued forestry possible.



PRECUT

More efficient shipping

When we ship wood to our factory, we do it as efficiently as possible. Pre-cut logs mean more efficient packaging and use of space. Doing this we keep transportation to a minimum and reduce waste material.



OUR GOAL: OPTIMAL PRODUCTION

At Kährs, the constant challenge is to perfect the production of wood floors - from optimizing the use of the raw material to minimizing emissions to the environment. Our production process is one of our main concerns and stems from our desire to protect our resources. Through optimizing our production we have managed to reduce the use of raw material by some 25 percent in recent years.

NOTHING GOES TO WASTE

We use our raw material as efficiently as possible. This means letting nothing go to waste. Any part of a log not used becomes biofuel. This fuel is used to heat the Kährs facility and to reduce our electrical needs.

Excess biofuel created from this process is sold to a local energy company, Kalmar Energi, which uses it for producing district heating. It is one way in which we give back to our community.

KEEPING EMISSIONS DOWN

Kährs chose early on to produce floors treated at the factory with low solvent finishes. This meant that we markedly reduced the amount of emissions from our production process. When it comes to wood dust, we installed the most advanced filter system in Scandinavia at our Nybro plant. In addition we took our dedication to lower emissions one step further. At the same time we installed our filter system we introduced the practice of continu-

- 1) Raw material is transported from the forest to the plant.
- 2) Trees become floors, which are shipped to the customer.
- 3) The waste material is transformed into energy.
- 4) The energy produced is used for district heating.
- 5) The ashes are transported back to the forest and used as fertilizers.

ous maintenance to prevent any leakages.

At Kährs we do more than just comply with all regulations and laws – we surpass them. We also keep our neighbors happy.

ENERGY

People enjoy the warmth of recycled wood

At our production plant in Nybro, nothing goes to waste. The portion of the logs that we are unable to use for floors becomes biofuel. Some of this fuel is used to heat up our own facilities. The rest is sold to a local energy company. At the moment, some 45,000 people in our neighborhood enjoy the warmth of our recycled wood.



NOISE

No complaints

We believe in being a good neighbor – and we always have. Our Nybro plant is situated right in the middle of a small town. This is an important reason why we have always minimized any detrimental effect on our neighbors. Have we been successful?



AIR

Fewer emissions than a small wood mill

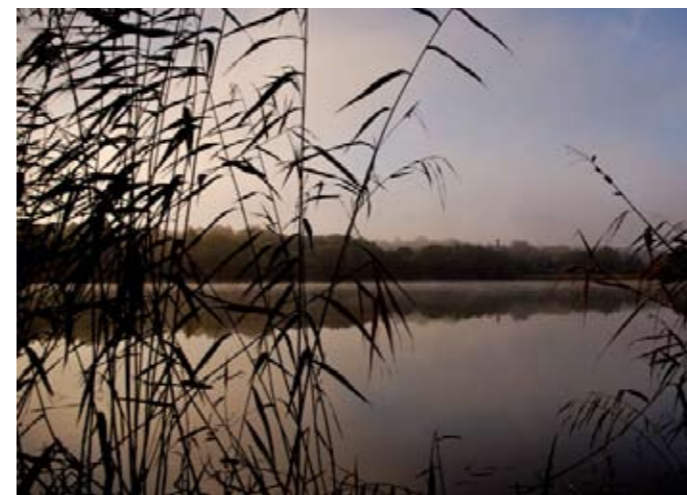
Over the years, Kährs has introduced a number of innovations that have contributed to lowering emissions to the air from floor production. One of these was choosing to produce floors treated at the factory with a low solvent finish, inspiring others to follow our example. At our plant in Nybro, we have also installed the most advanced filter system in Scandinavia. We are proud of the fact that our main production plant in Sweden emits less waste than a small wood mill.



WASTE

Reducing waste by 30 percent

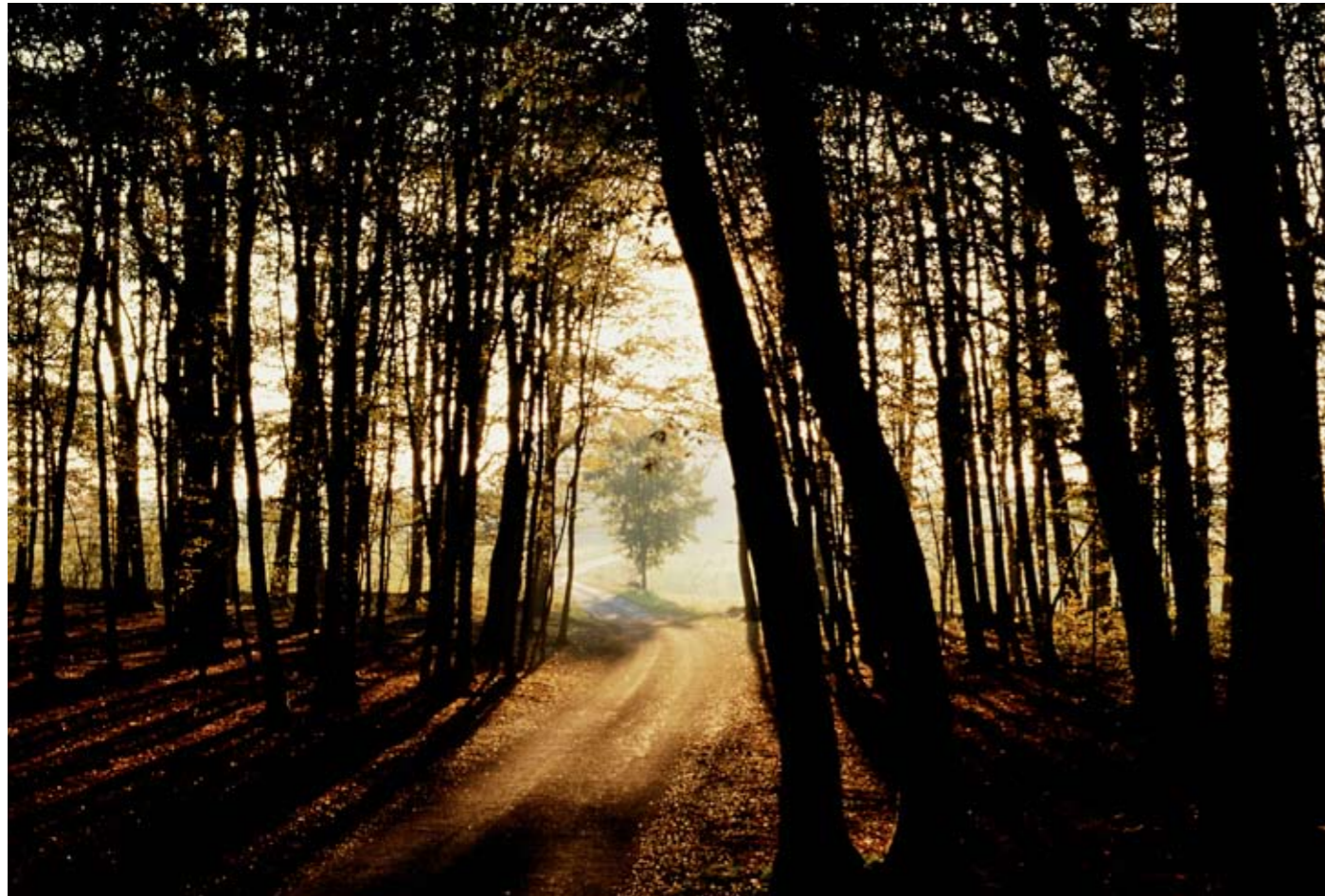
Over the last decade, we have worked to minimize the amount of waste that we produce. As a result, we produce 30 percent less waste today than we did ten years ago.



WATER

Natural cleaning

Kährs cleaning system for process water is so effective that we have permission to release the water directly into the sewage system. In addition, we co-operate with universities and organizations on projects to improve the general industrial handling of process water. One of these projects, conducted in co-operation with the University of Kalmar, strives to release the water directly into the sewage system achieving high quality effluents. The project will investigate the potential of using industrial residues in the wood industry for waste water treatment in an ecological engineering approach.



Studies of suppliers of Merbau

At Kährs, we continuously evaluate our suppliers in order to ensure that their forestry is performed in a sustainable way. We cooperate with organizations and universities to achieve a thorough examination of the standards and ethics of our suppliers. The result of one of these studies caused us to not change our Malaysian supplier of Merbau, an exotic

wood species that accounts for some 2 percent of Kährs total production of wood floors. The study aimed at suggesting environmental and social criteria for evaluating suppliers. It also suggested how purchasers of raw material can help suppliers to fulfill these criteria.

OUR ROADMAP TO A BETTER WORLD

For 150 years Kährs has crafted more than just beautiful wood products. The company has created a culture of design innovation and a passion for the environment.

For the next 150 years we pledge to improve upon our commitment to being the most sustainable organization we can become. We use the CSR Europe roadmap guidelines listed below:

OUR GOALS USE THIS ROADMAP TO:

- Innovation and entrepreneurship
- Skills and competence building
- Equal opportunities and diversity
- Health and safety
- Environmental protection

OUR STRATEGIES TO ACHIEVE THESE GOALS ARE:

- Corporate responsibility in the mainstream of business
- Stakeholder engagement
- Leadership and governance
- Communication and transparency
- Business-to-business co-operation and alliances

WE BUILD ON TWO ESSENTIAL PREMISES:

- Corporate responsibility calls for voluntary initiative beyond legal requirements and contractual obligations, as well as translating into practice international and European principles, standards and conventions in our business operations in Europe and abroad.
- We ensure continuous awareness and commitment of our employees and managers to apply sound standards in business ethics and integrity wherever we conduct business.



University project for cleaner water

Kährs cleaning system for process water is so effective that we have permission to let the water straight out into the sewage system. But in order to improve the general industry handling of process water, we cooperate with universities and organizations. One of these projects is conducted in cooperation with the University of Kalmar, Sweden. The aim is to develop an innovative approach for the integrated management

of wastewater, storm water and leachate generated within industrial sites in the wood sector. The project investigates how to treat contaminated water in a cost-effective way, achieving high quality effluents. Besides this, the project will investigate the potential of using industrial residues in the wood industry for wastewater treatment - with an ecological engineering approach.

Comfort for your home and soul

Wood floors keep your feet warm on cool days and refreshingly cool on warm days-thanks to their natural cellular structures. Wood was designed by nature to be a great insulator and has a way of softening interiors. No other floor covering can compete with the spirit of wood, either physically or emotionally. So take off your shoes and relax. Your wood floor will offer better insulation than ceramic tiles and is much warmer than plastic laminate or thin vinyl floors. Naturally.



Design trends are constantly changing and choosing material can be difficult when thinking long term, but one thing is for sure, the use of sustainable and healthy products is here to stay. As a result, top industry professionals and design savvy consumers not only want a product that is beautiful but also environmentally responsible. Wood floors offer both. Your interior settings can change many times over the years while your floor remains timeless, only adding value to your new design. Wood floors conform to their and environment and add value with age.

Most Architects and Designers agree that wood will be the preferred building material of the future. One of the reasons is that wood is more environmentally friendly than other building material. It plays an important part in counteracting climate change. According to the European Union Commission, an increased use of wood products would stimulate the planting of new forests, resulting in a reduction of carbon dioxide. If using wood can reduce the amount of pollution in the air while creating a upscale feeling in even the smallest setting, why choose any other material?

MORE REASONS FOR CHOOSING WOOD

- Wood is sustainable and strong
- Wood is versatile and beautiful
- Wood is part of our cultural heritage
- Wood is biodegradable
- Wood stands for quality

The last point on this list – quality – is something that has been on top of Kährs agenda right from the start. We take quality seriously.

Quality and environmental certifications and EMAS-registrations

All the production units within the Kährs Group have implemented quality and environmental management systems according to ISO 9001 and ISO 14001 and are registered under EMAS. All Kährs production units – Nybro, Ljusdal, Brumunddal and Blomstermåla – have met the certification requirements.



FSC

The Forest Stewardship Council

The FSC's tracing system (Chain of Custody or CoC) connects responsible forestry methods and products with the consumers. With this traceability, companies can show that they support environmentally and socially responsible forestry and put the FSC mark on their products. Kährs obtained its FSC certificate in 2005.

ISO 14001

Environmental management

The ISO 14000 environmental management standards exist to help organizations minimize how their operations negatively affect the environment (cause adverse changes to air, water, or land), comply with applicable laws, regulations, and other environmentally oriented requirements, and continually improve on the above. Kährs received the ISO 14001 certification 1997.



EMAS

ECO Management

EMAS is the voluntary environmental regulation within the European Union. Its purpose is to promote environmental control, environmental improvements, and environmental audits within industry. This will provide information to the general public about the participating companies' environmental credentials.

Download our EMAS environmental report in English covering Kährs Group and our factory in Nybro, Sweden. www.kahrs.com

NWFA

The National Wood Flooring Association

NWFA is a non-profit trade association representing all segments of the wood flooring industry, including manufacturers, distributors, retailers, and installers. The NWFA's mission is to be a leading resource of accurate and expert wood flooring information for the consumer and the wood flooring industry.

ISO 9001

Quality Certification

ISO 9000 is a family of standards for quality management systems. ISO 9000 is maintained by ISO, the International Organization for Standardization and is administered by accreditation and certification bodies. Kährs received the ISO 9001 certification 1999.

CAN WE DO ANYTHING?

Small things that make a big difference

There are a number of things that we can all do to respond to the threat of global warming. Below you will find some of the little things that if we each change our ways, we could make a big difference to the future of our planet. As an added bonus, the changes may fatten your wallet as well.

CHANGE YOUR LIGHTBULBS

If you are looking to put a green bulb in your favorite lamp, choose a compact fluorescent lightbulb (CFL). CFLs only use one-quarter of the electricity and last several years longer, compared to traditional bulbs. Most 7-watt CFLs are comparable to a regular 40-watt bulb, while 26 watts is the typical equivalent of 100 watts.



SHUT OFF YOUR COMPUTER

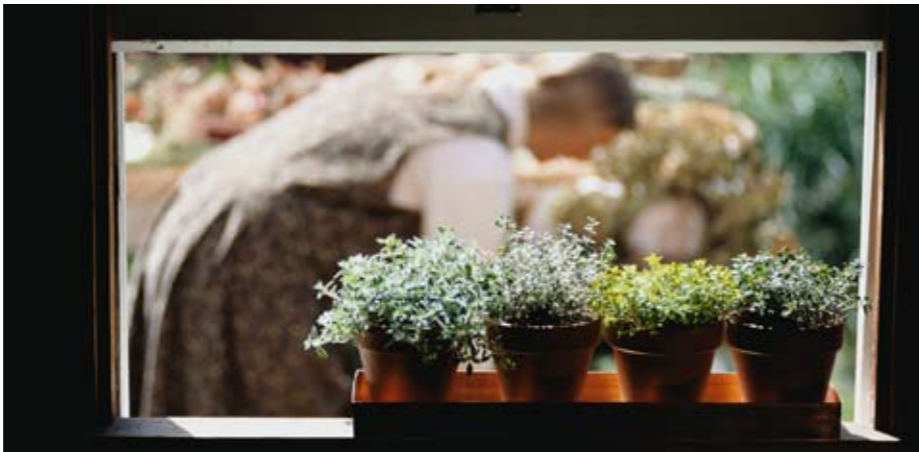
A screen saver is not an energy saver. According to the U.S. Department of Energy, 10 percent of the all the electricity consumed in our homes is standby power used to keep electronics – like TVs, computers and stereos – running when they are supposed to be "off". So make sure you really turn them off.

INVEST IN LONG LIFE PRODUCTS

There is a simple way to reduce our impact on the environment. That is to consume less. Invest in good quality, beauty and classic design – and the need to constantly buy new things will automatically be reduced.

OPEN A WINDOW

Allowing your home to be warmer in the summer – and colder in the winter – is an effective way to radically bring down carbon dioxide emissions: Open windows instead of running the AC, adjust the thermostat a couple of degrees higher in summer and lower in winter, and improve the insulation in your walls. You will be surprised at the difference in your electricity bill.



PAY YOUR BILLS ONLINE

Banking and paying bills online dramatically reduces the amount of paper being used. It also helps reduce fuel consumption by the trucks and planes that transport paper checks.



EAT LESS MEAT

Believe it or not, your hamburger is responsible for more global warming effects than your car. The international meat industry generates about 18 percent of the world's greenhouse gas emissions, which is more than transportation. The culprit is the nitrous oxide and methane in manure. Methane has a warming effect that is 23 times as great as carbon dioxide – and nitrous oxide 296 times as great.



SAY NO TO PLASTIC BAGS

Most of the plastic bags that you bring home from the store end up in a landfill. Plastic bags are mostly made of polyethylene, which can take up to 1,000 years to biodegrade in landfills –while emitting harmful greenhouse gases. One way to help is to bring a reusable bag on your next shopping trip.



SUPPORT YOUR LOCAL FARMER

Buying locally produced fruit, vegetables, meat, and milk means reducing fuel consumption by the trucks and planes that transport food. This reduction will not only be seen across the country, but also around the globe. Another reason: the food will taste better.



KILL THE FAX AT QUITTING TIME

Make an extra round before you leave the office to make sure that all lights, computers, monitors, faxes and printers are turned off. This will result in reducing electricity use. It will also extend equipment life and lower maintenance costs.



CHECK YOUR TIRES

Something as simple as keeping your tires properly inflated can improve gas mileage by more than 3 percent and don't forget about replacing clogged air-filters, this can boost efficiency by nearly 10 percent. After these small changes you will find that your car is not as thirsty as you thought.



WWW.KAHRS.COM